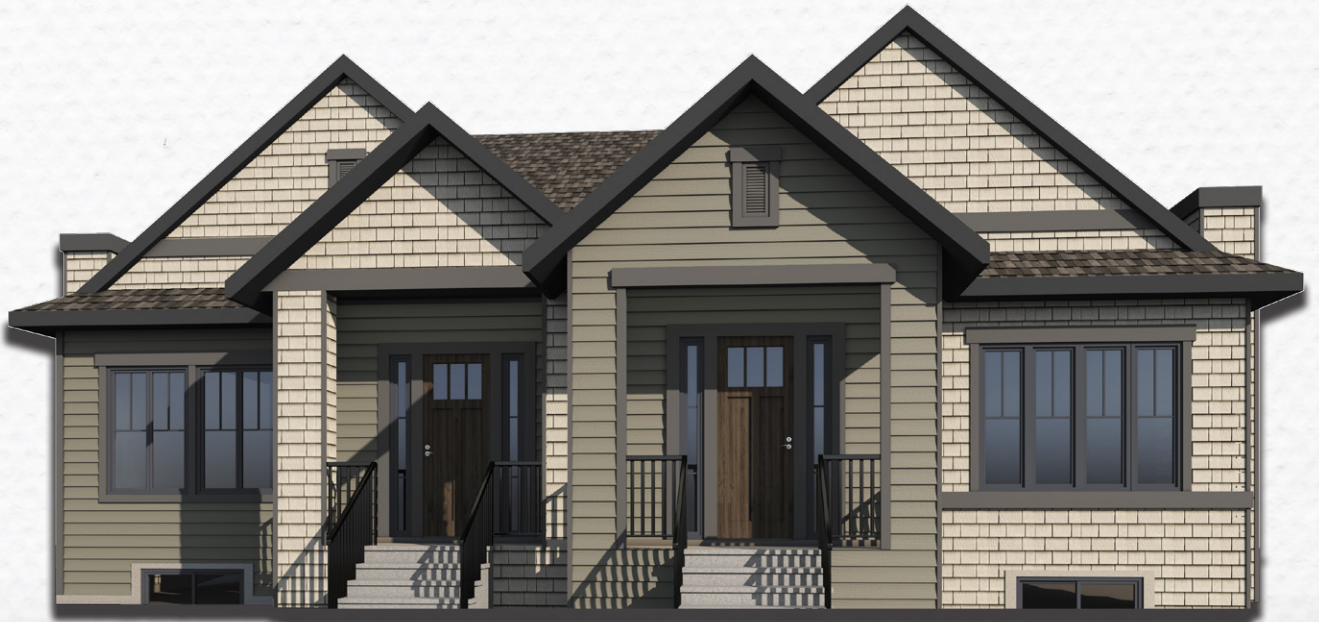


*Homes*  
**Baywest**  
Crafted for Life. Designed Around You.

# MAPLE

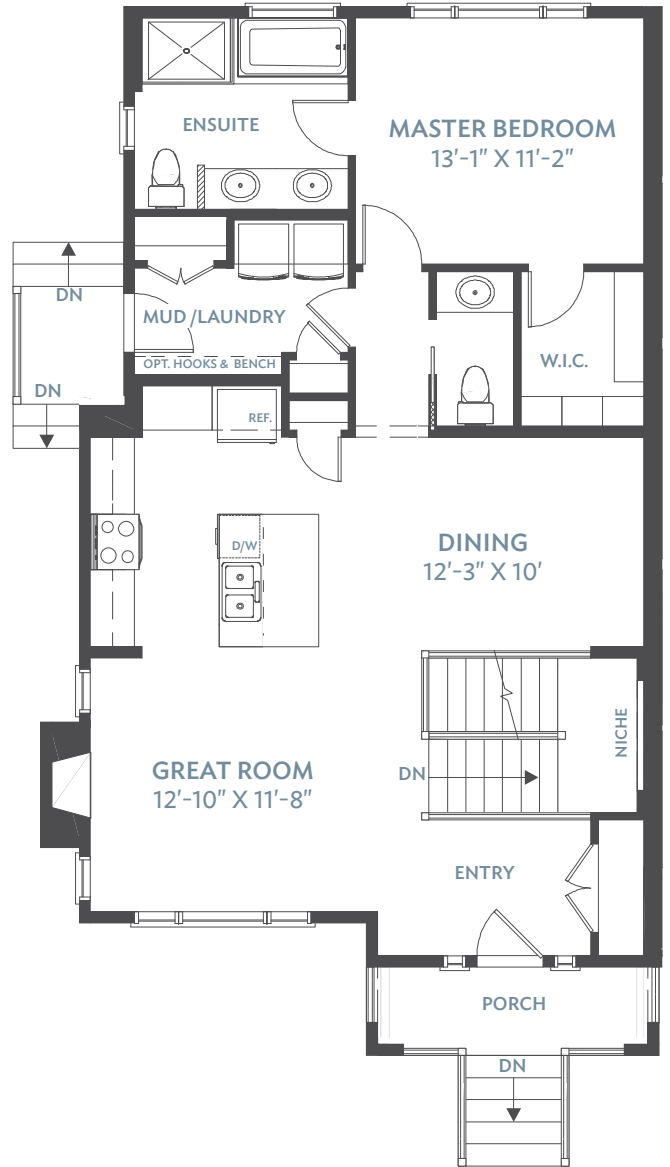
1,002 SQ.FT. | BUNGALOW VILLA



# MAPLE

## MAIN FLOOR

HOME	\$	_____
	\$	_____
GST	\$	_____
<b>TOTAL</b>	<b>\$</b>	<b>_____</b>

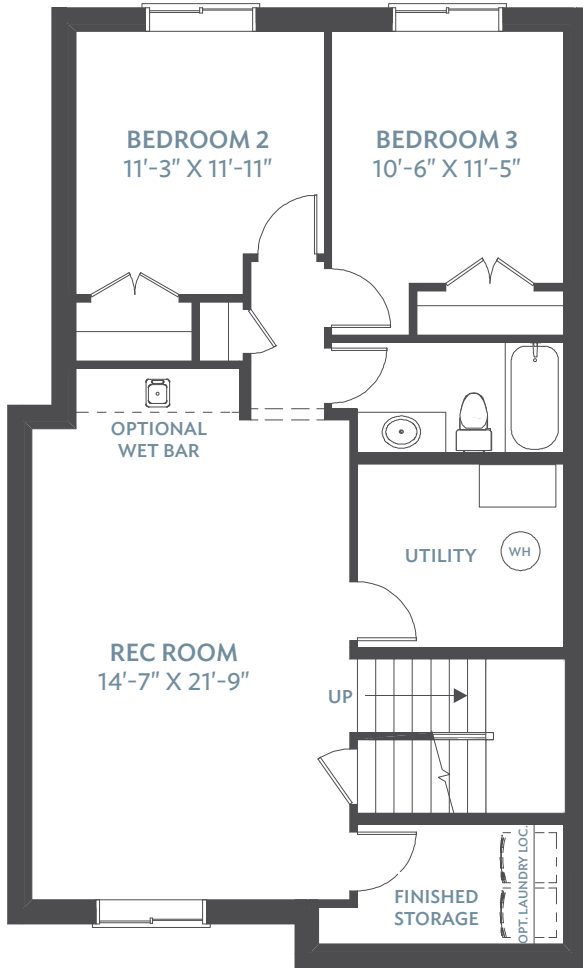


MAIN | 1,002 SQ.FT.

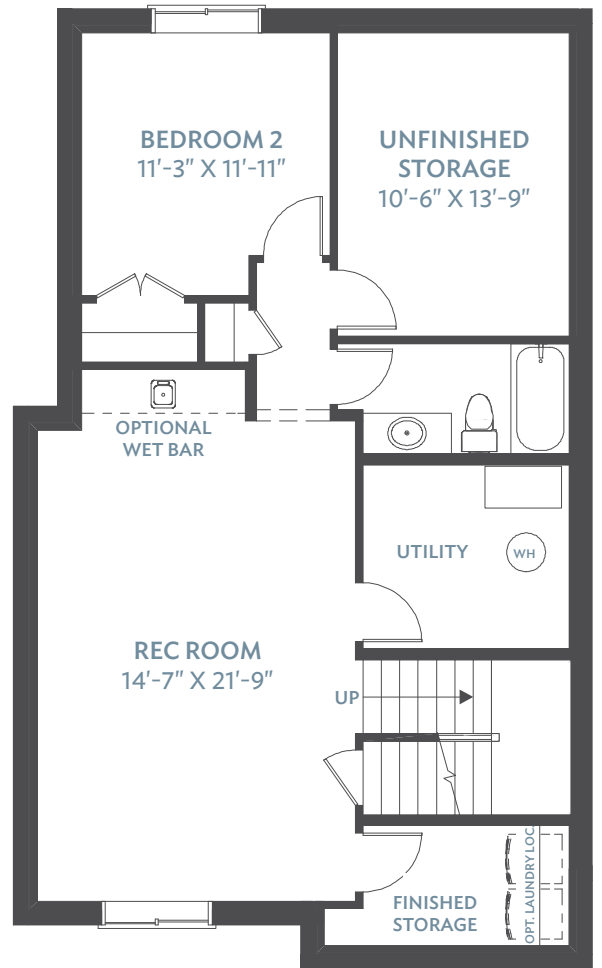
TOTAL | 1,002 SQ.FT.

# OPTIONS

FULL BASEMENT DEVELOPMENT  
ADDS 771 SQ. FT.

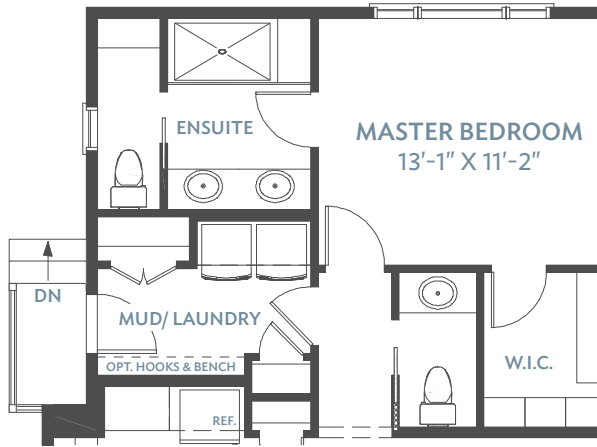


PARTIAL BASEMENT DEVELOPMENT  
ADDS 618 SQ. FT.

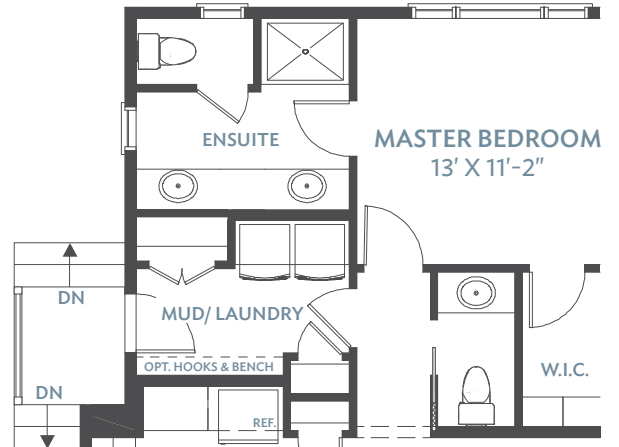


# OPTIONS

## ENSUITE 1



## ENSUITE 2



This is a model designed by Baywest Homes LP. Plan and exterior elevation are illustrations only.

Elevations, dimensions and specifications shown may be approximate and display non-standard features. The builder reserves the right to make changes without notice. All rights reserved. © Baywest Homes

BAYWEST HOMES.COM

{ FIND US ON }

