



WILLOW

1,298 SQ.FT. | BUNGALOW VILLA



WILLOW

JUNIPER

LAUREL

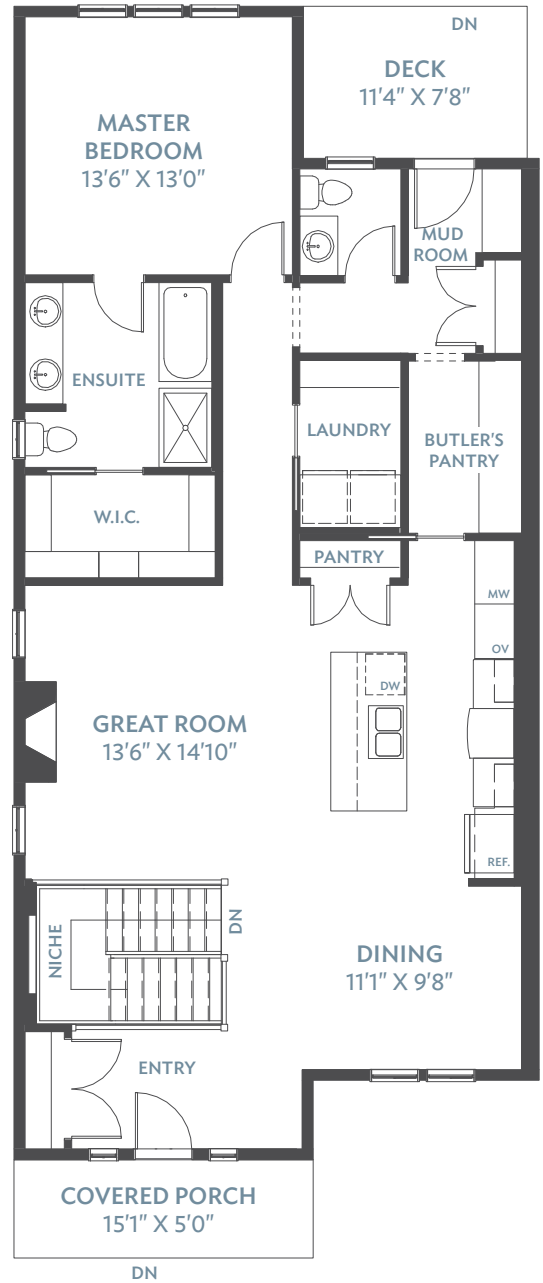
JUNIPER

ASPEN

WILLOW

MAIN FLOOR

HOME	\$	_____
	\$	_____
GST	\$	_____
TOTAL	\$	_____

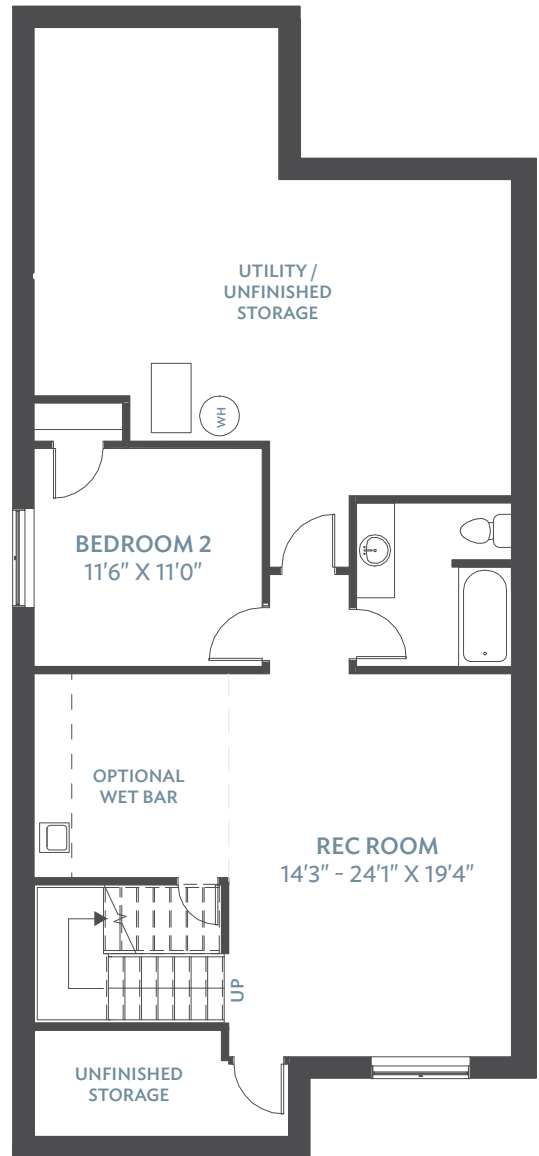
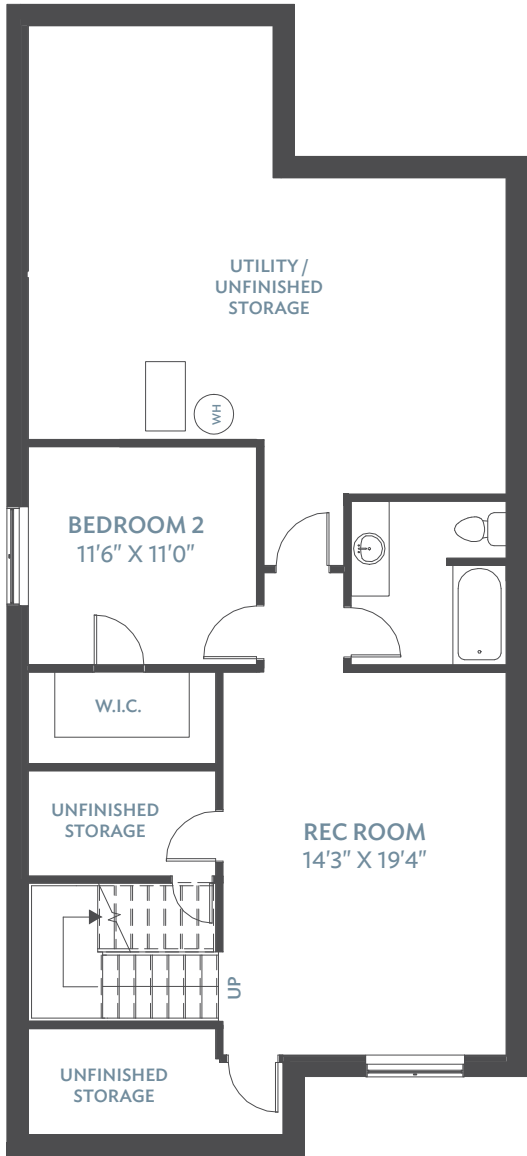


MAIN		1,298	SQ.FT.
LOWER		604	SQ.FT.
TOTAL	 	1,902	SQ.FT.

LOWER LEVEL

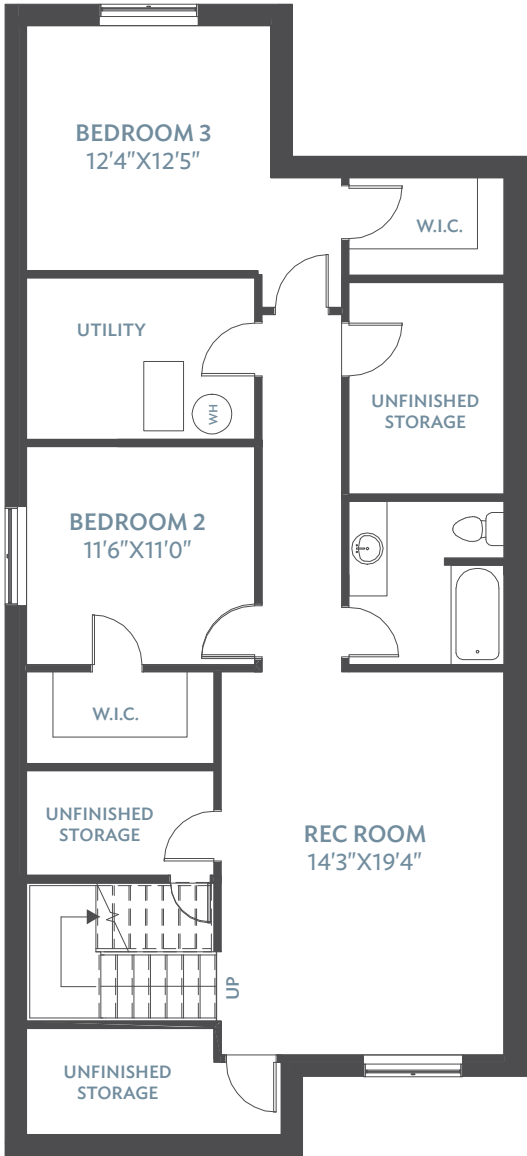
OPTIONS

EXPANDED REC ROOM WITH 1 BEDROOM

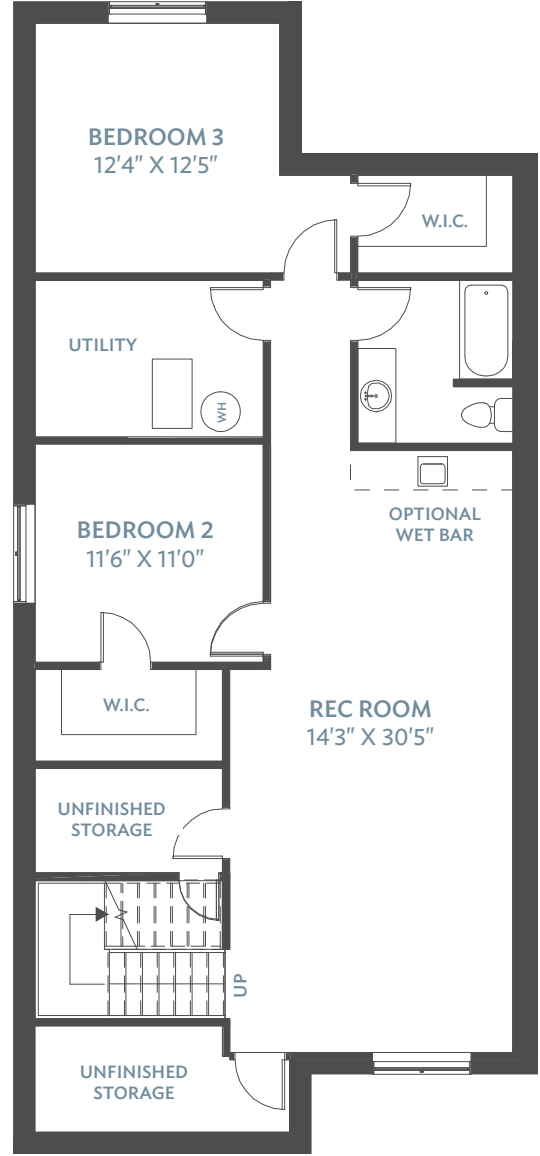


OPTIONS

FULL DEVELOPMENT
ADDS 379 SQ. FT.



EXPANDED REC ROOM WITH 2 BEDROOMS
ADDS 379 SQ. FT.

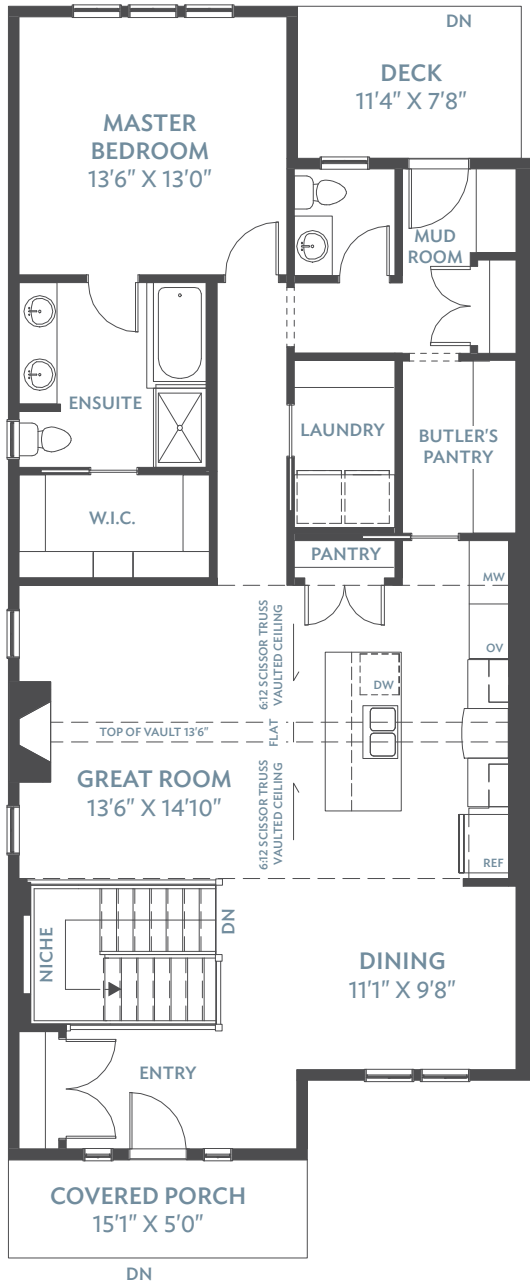


This is a model designed by Baywest Homes LP. Plan and exterior elevation are illustrations only.

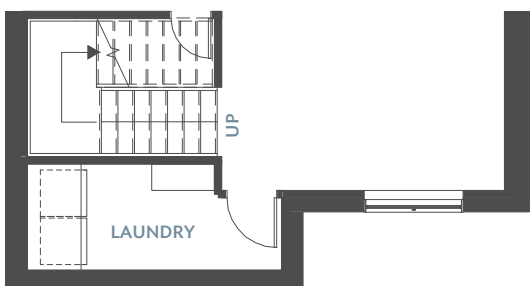
Elevations, dimensions and specifications shown may be approximate and display non-standard features. The builder reserves the right to make changes without notice. All rights reserved. © Baywest Homes

OPTIONS

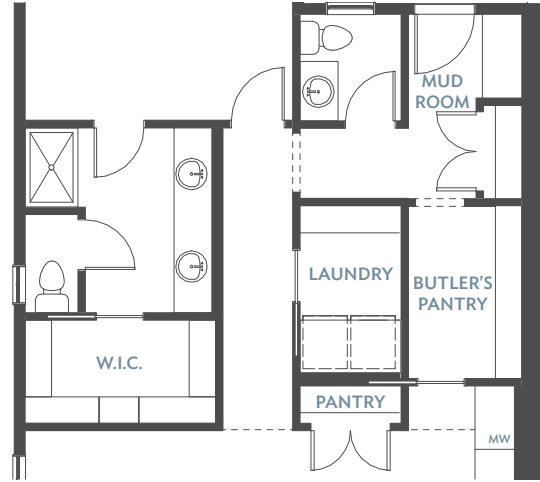
VAULTED GREAT ROOM



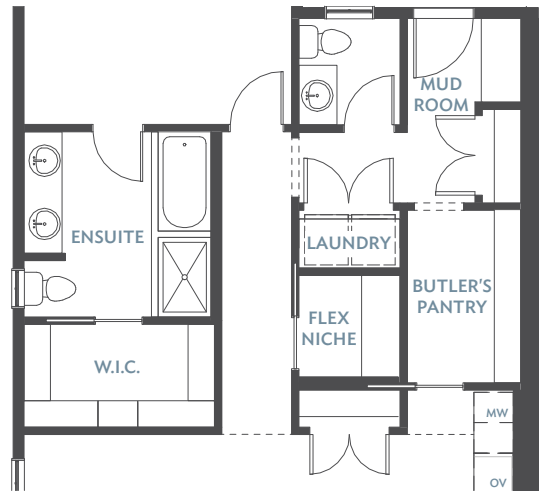
BASEMENT LAUNDRY
ADDS 68 SQ. FT.



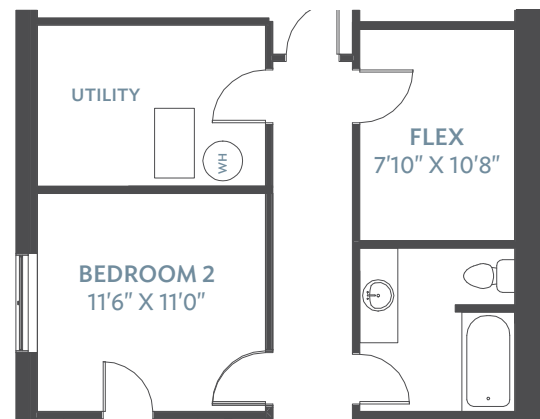
ALTERNATE ENSUITE



FLEX NICHE



BASEMENT FLEX ROOM
ADDS 90 SQ. FT.



BAYWEST HOMES.COM

{ FIND US ON }



Homes
Baywest
Crafted for Life. Designed Around You.